

**Bucket capacity :** 1.8 m<sup>3</sup> -- 2.6 m<sup>3</sup>  
**Engine rate :** 92 KW(123 hp)  
**Bucket load :** 3 ton



---

**CG930K**

---

**CHINA CHENGGONG HEAVY INDUSTRY CO.,LTD.**

# “TEAM” TECHNOLOGY

“**T**ransmission  
**E**ngine  
**A**ttachment  
**M**anagement”

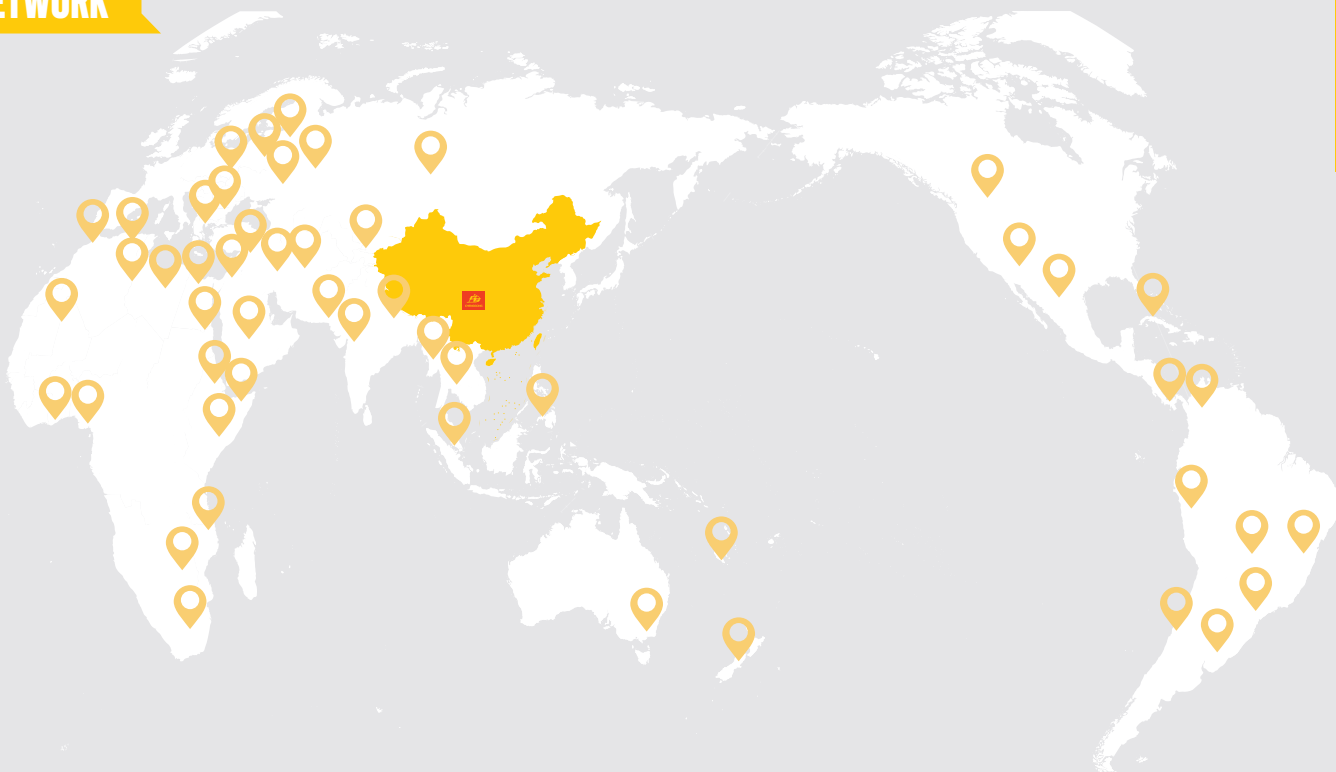
“TEAM” technology is a Chenggong exclusive management solution which integrates Transmission, Engine and Attachment to improve the working efficiency and to reduce energy consumption. It is the evidence showing Chenggong constant efforts for technology exploration and satisfaction of reducing final customers cost. Chenggong technology upgrading, like its social responsibility, never stops.



Chenggong has introduced TEAM technology into a new generation of construction machinery and equipment. By a new hydraulic and hydrodynamic transmission energy-saving technology with 100% intellectual property right and the application of Dynamic Simulated Structure Analysis Program in wheel loader design, energy utilization efficiency and fuel economy are improved. Fuel consumption down 10%, but operating efficiency up 12%.



## NETWORK



Customers from more than 51 different regions

## PRODUCTS



CG930K



CG950K



CG970K



CG990K



862H



866Htc



866H



MG1320M

# MACHINE FEATURES

## HYDRAULIC SYSTEM

- 1 With Chenggong TEAM high pressure hydraulic system, and the Max bucket breakout force 102kN.
- 2 Large-diameter hydraulic pipe lines reduce energy consumption during hydraulic power transmission and reduce operating costs.
- 3 International level high-pressure pipeline equipment to reduce manufacturing defects to as low as possible, like zero.
- 4 Advanced steel pipe welding technology ensures smooth weld seam, no slag pollution, and low flow resistance inside of pipes.

## ATTACHMENT

- 1 Forged hydraulic cylinder head, not easy to break, the piston rod is quenched by medium frequency, with higher hardness, strength and longer life.
- 2 The pin shaft uses 40Cr material and the tensile strength is increased by 35%. It is matched with the O-ring dust-proof structure to prevent the sediment from entering the pin hole. The oil hole cylinder sleeve ensures that the pin shaft is fully lubricated.
- 3 The bucket, equipped with wear-resistant plate, is made of special steel plate. The bucket teeth are made of wear-resistant alloy steel material + forging excavator bucket teeth technology. The wear resistance is 1.5~2 times higher than before.
- 4 Unique Chenggong design of bucket shape make the transportation position angle up to 48°. Each bucket actual loading is more than before, and the hopper does not spill during the walking. Shovel cutting operations are more comfortable, greatly increasing the full bucket rate and ensuring high output ratios for customers.
- 5 The electronic leveling device and the lifting cylinder limit system is useful to improve the control accuracy and improve the work efficiency.





## ELECTRICAL SYSTEM

**1** Different sensors, combined with the instrument, could timely grasp wheel loader working information, which makes the operation is more safe and efficient.

**2** The wire harness is manufactured by world-class processing equipment and components. It is sealed well and corrosion-resistant for stable power supply.

**3** Three sets of working headlights guarantee high brightness, strong penetrating power, wide illumination range, and even high efficiency at night.

**4** Advanced cold starting battery keeps long time energy storage, and ensure stable power supply in low-temperature.



## TRANSMISSION SYSTEM

**1** The hydraulic torque converter with the TEAM technology can achieve a hydraulic conversion rate more than 83%. With the precision planetary power shift transmission, the gear shift is fast, ensuring high-efficiency operation.

**2** The new drive shaft adopts double universal joint intermediate support making torque transmission more stable. The 7C flange effectively prevents the bolt from being damaged so that the connection is reliable.

**3** The Chenggong 30 Wet axle with 100% intellectual property is an important step of the drive axle technology. It has been widely praised by customers both at home and abroad since its beginning.

**4** The wheel oil seal is a new labyrinth oil seal model and a new venting cap structure model, which has better sealing and anti-sand effect, and is effective in extreme conditions.

# POWER FOR RELIABLE





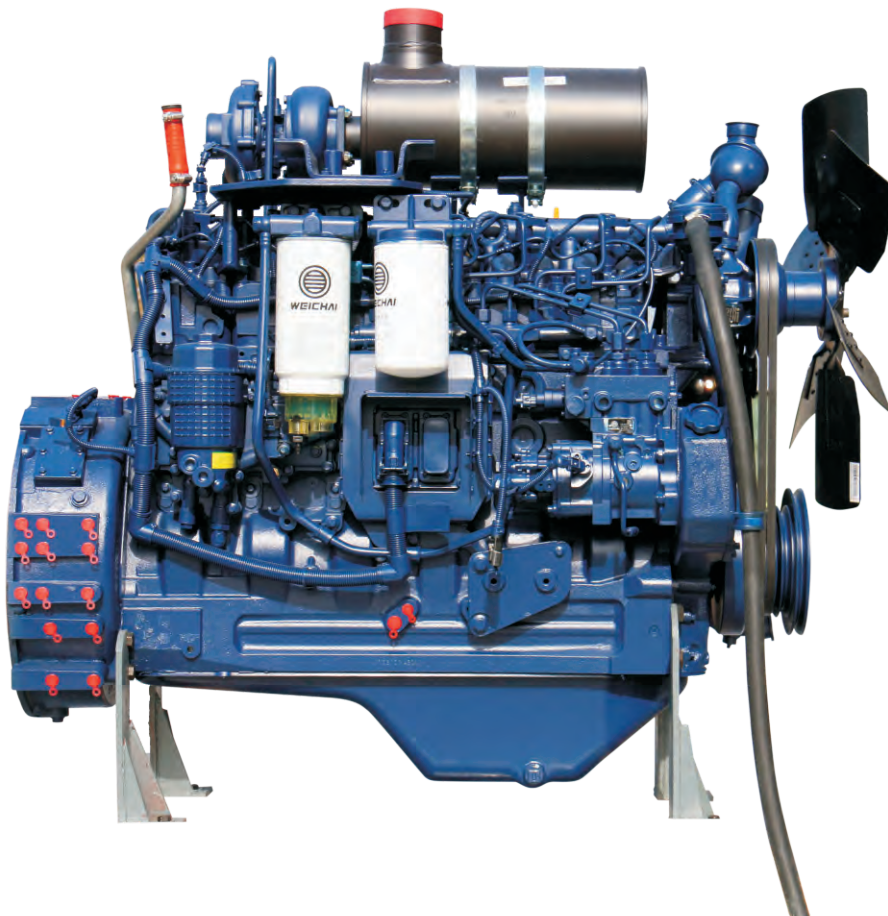


**1** WEICHAI WP6G series engine models keep low speed, high torque and strong power. TEAM technology and above engine models ensure stable power output and longer service life.

**2** The new shock-absorbing radiator makes the its body flexible and avoids the cracks in the welding position of water channel. Compared with the previous generation, its the durability is greatly improved.

**3** The multistage fuel and air filtration system could effectively work in the dusty working conditions, ensuring the cleanliness of the engine systems, preventing the early wear of the engine, and improving the fuel burning rate which is good for environmental protection and less fuel cost.

**4** The new designed layout of the radiator improves the heat dissipation ability for both radiator and the torque converter, ensuring that the oil temperature and water temperature are stable in the optimal efficiency state.



# STRUCTURE FOR DRIVER TRUST

**1** It adopts the unique tower box frame of Chenggong, equipped with large-distance hinged tapered bearings, long wheelbase arrangement, reasonable structure, perfect for carrying super load.

**2** The counter-weight assembly has an attractive and useful outlook with back slope 28°, providing good mobility when working condition is steep slope.

**3** Streamlined steel mud, solid and reliable, can effectively block the sediment and reduce its pollution and damage to the whole machine.

**4** Superior rear axle oscillating ability helps to maintain the loader in four rounds of contact with the ground in rugged conditions, providing excellent traction.



Front



Rear

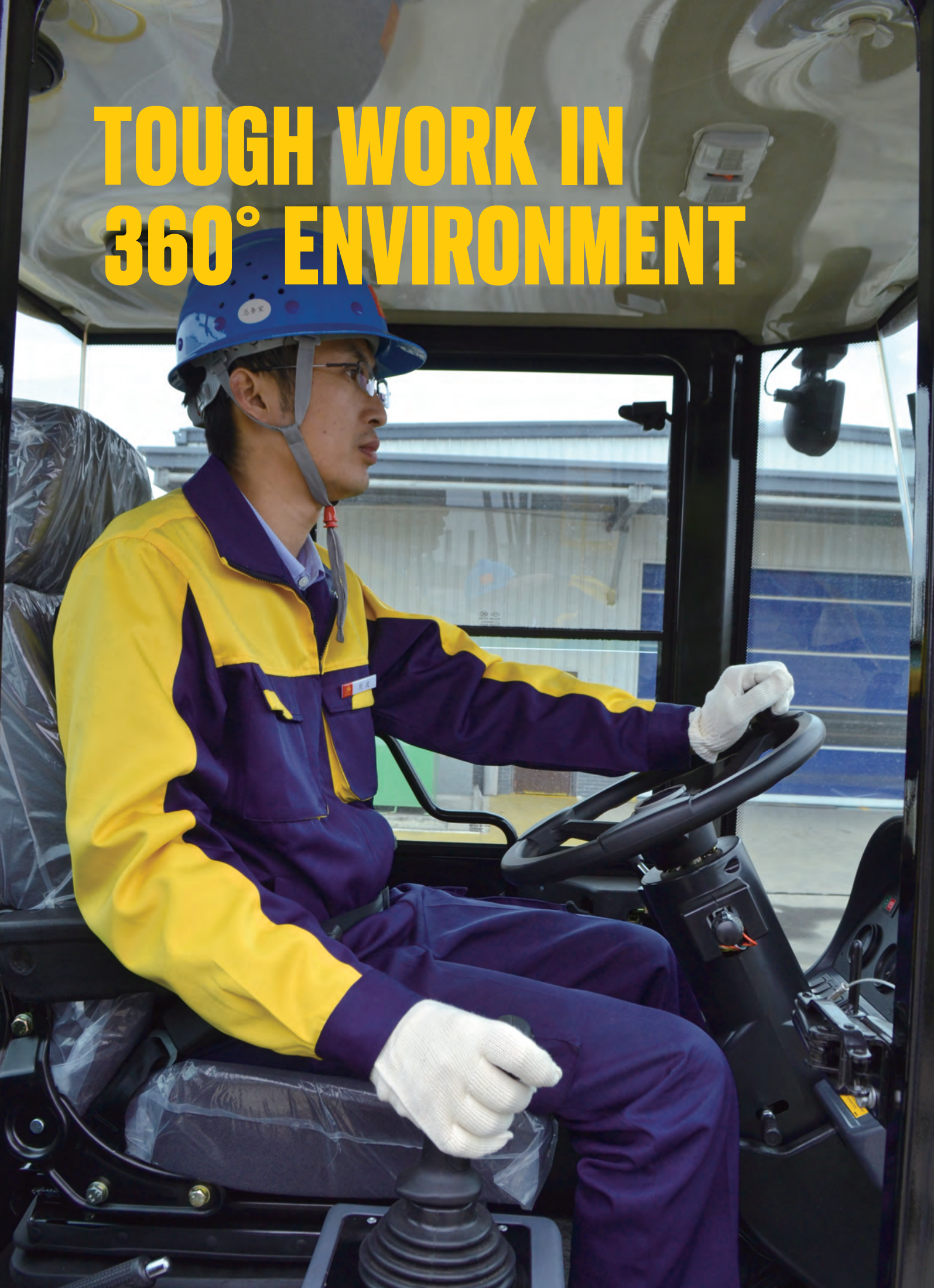








# TOUGH WORK IN 360° ENVIRONMENT





**1** 360° cab is spacious and comfortable with an open view . Such cabin design has a number of patents. Its convex wide-angle rear-view mirror greatly expands the driver's rear view range.

**2** Two air outlets to remove the frost of front window and ensure the driver's sight is clear.

**3** Adjusting window glass on the left enhances air flow and keep the indoor air fresh.

**4** The single-handle pilot control with the operating force between 0.3~0.5Kgf, which makes the operator feel comfortable and comfortable.

**5** The upgraded audio system USB could also connect the external storage device and charge the mobile phone and other appliances.

**6** Standard air conditioning to provide a comfortable working environment for the driver.

**7** The wiper has a water spray function, which is convenient for the driver to clean the glass during work.

**8** The steering wheel is adjustable for front side and rear side. Four-direction adjustable suspension seat gives drivers the best view.



# WHY SO SIMPLE

**User-friendly design makes his model maintenance easier and allows drivers to feel Chenggong convenient operation.**

**1** A new generation of Chenggong oil products with long oil change interval and save oil cost.

**2** Service power socket 24V to provide external power.

**3** The maintenance space is large, and the service manhole is between the chair and cabin floor.

**4** The liquid level and oil level display device are easy for wheel loader drivers.

**5** Lubrication position is convenient for wheel loader drivers.

**6** The external caliper disc parking brake is simple, stable, and easy to maintain.

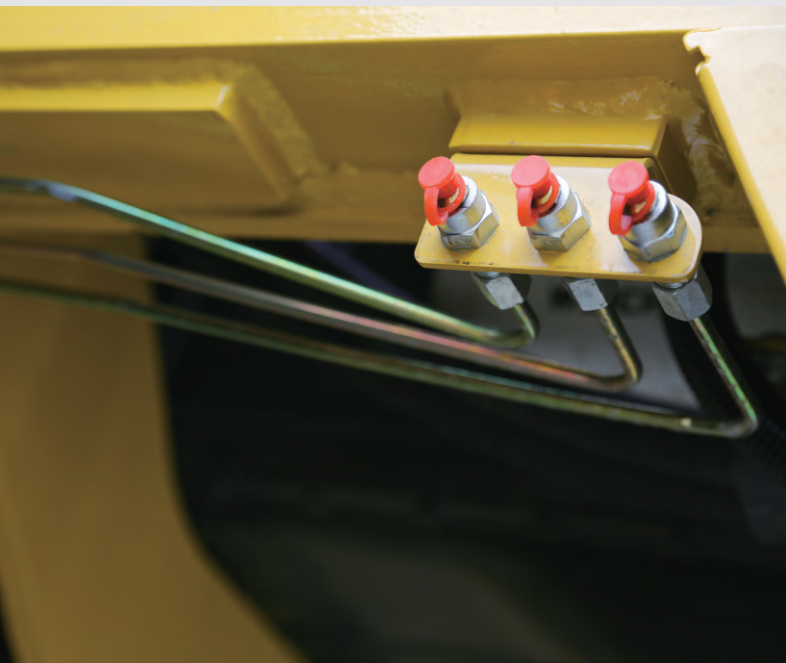
**7** The external air conditioner condenser has good heat dissipation effect, and the protection net prevents foreign matter from being clogged and easy to maintain.

**8** The Weichai WP10G engine automatic alarm system, with the Weichai WP10G intelligent fault diagnosis, helps customers manage the equipment.

**9** The professional service team provides customers with 24h service and remote technical guidance on on-site repair technology when needed.

**10** The large brake disc makes the braking effect more stable and the brakes more reliable. Dry brakes are easy to maintain and wet brakes are suitable for environmentally demanding applications.

**11** Electrical rear hood for engine easy maintenance. Metal material, integral stamping structure and high strength, provide better protection for the engine.









# RESPONSE TO EACH DEMAND

## Customer support

Maybe Chenggong staff are not qualified salesmen, but Chenggong staff must be the customer's intimate equipment consultant. We are not only familiar with our product features, but also provide a series of solutions from the customer's point of view, including: One-stop customer support services like model selection, attachment configuration, financing purchase, user training, maintenance, spare parts supply, and second-hand machine disposal. Chenggong service target is to help customers rational investment and safe use.

## Genuine parts

Direct supply of genuine parts is Chenggong responsibility for the customers. Genuine parts make the equipment in the best condition, effectively reduce the recurrence of faults and equipment downtime, minimizing the loss of defects. Chenggong Genuine parts relax customers.

## Fast network

The highly developed logistics industry has created favorable conditions for the delivery of genuine parts. China Chenggong Heavy Industry Co.,Ltd will use all existing logistics methods to meet customers demand, and always focus on customer concerns.









# SUPPORT WHEN YOU NEED





### SERVICE REACTION

Quick response to customers questions;  
Spare parts supply guarantee 10 years.

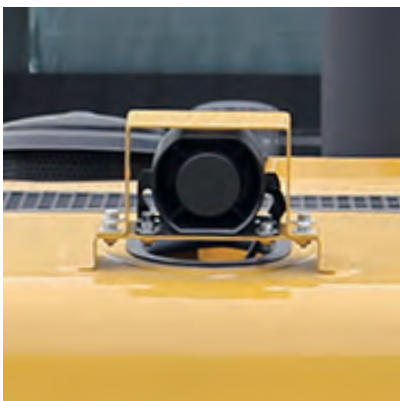
### KEY SERVICE

Model selection and attachment configuration  
Financing purchase  
User training  
Maintenance  
Spare parts supply  
Repair service  
Second-hand machine



# SAFETY ALWAYS PRIORITY

Wet brake type,  
oil-bath brake discs.  
No static sparks,  
and such brake type is suitable for  
strict environment standard working conditions.





**1** The engine fan is equipped with a cover to provide a standard safety gap.

**2** Professional anti-skid ladder, anti-skid pad and anti-skid counter-weight and increased fence to ensure the safety of users action when getting on and off this wheel loader.

**3** Reversing automatic alarm and the rear of the hood is added with a Convex mirror. The rear view helps the safety of reversing.

**4** When the brake air pressure is too low, the low-pressure alarm buzzer will automatically remind the driver.

**5** Lift the arm support to prevent the boom from falling and make maintenance and repair safer.

**6** When the hydraulic control lock is opened, the handle can be locked to fix the posture of the working device to prevent accidental operation.

**7** The unique fuel tank layout not only has the function of counterweight, but also avoids the defect that fuel tank is vulnerable to be impacted.

**8** Outlook is a curved design, which is stable and beautiful and also reduces accidental damage.

**9** Seat belt and safety logo, even for newcomers, can get full safety tips.

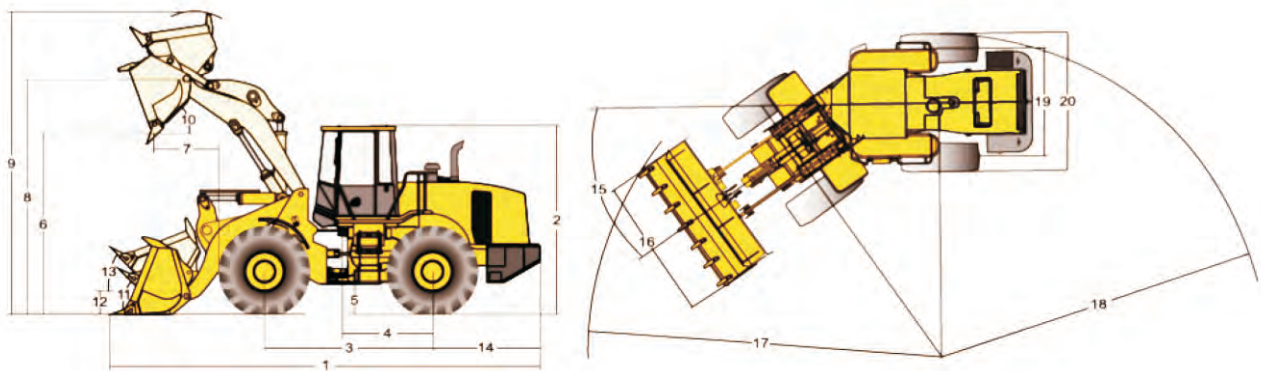




# SPECIFICATION







1	Length	7132mm	11	Max rollback ( at ground )	43.7 °
2	Height	3193mm	12	Height of articulation of arm in position	446mm
3	Wheel base	2760mm	13	Max rollback ( at carry position )	48 °
4	Articulation to rear axle	1445mm	14	Center of rear axle to counter weight	1860mm
5	Ground clearance	390±20mm	15	Turing radius angle	35°
6	Dump height ( 45°)	2964mm	16	Overall width ( bucket )	2551mm
7	Dump clearance	950mm	17	Min.turning radius (bucket carry position)	6159mm
8	Height to hinge pin ( full raised )	3825mm	18	Min.turning radius over tires	5504mm
9	Height ( full raised )	4860mm	19	Wheel tread	1850mm
10	Dump angle	45°	20	Max.Machine width	2295mm

ITEM	SPECIFICATION	
Operating specification		
Operation weight	10200kg	
Bucket capacity	1.8m³ ( 1 8 -2 6 )	
Rated load weight	3000kg	
Max.traction force	106kN	
Breakout force	102kN	
Max. Grade ability	28 °	
Max. Forward speed	33km/h	
ENGINE		
Model	WP6G125E333	WP6G125E201
Type	Electronically controlled, inline, four stroke, supercharged	Inline, four stroke, supercharged
Cylinder	6-Ø105 x 130mm	
Peak torque	570N m	
Rated power	92kW	
Engine rated revolution	2000r /min	
Torque converter and transmission		
Model	CG30	YD130
Torque converter type	Single stage, double turbine four components	Electronically controlled, inline four stroke, supercharged
Transmission	Mechanical power gear shift	Electro-hydraulic control power shift
Gears	CVT ( continuously variable transmission ) 2 forward and 1 reverse	4 Forward 3 Reverse
AXLE		
Main transmission type	1 st level spiral gear deceleration	
Wheel side braking type	Planetary reducer	
Driving axle braking type	Air over oil wet brake	

ITEM	SPECIFICATION
TIRE	
Tire specification	17.5-25-12PR
Front tire pressure	0 34MPa
Rear tire pressure	0 23MPa
Ply rating (PR)	12
Pattern	L -3
HYDRAULIC SYSTEM	
Pressure	19MPa
Lifting time	5 5s
Cycle time	9 8s
STEERING SYSTEM	
Type	Full hydraulic articulation
Turning angle(Left/Right)	35 ° /35 °
Steering pressure	15Mpa
BRAKE SYSTEM	
Braking	Air over oil brake
Parking brake	Manual shaft caliper disc brake
OIL CAPACITY	
Fuel tank	140L
Hydraulic oil tank	102L
Engine oil tank	16L
Torque converter and transmission oil capacity	27L
Front and Rear axle oil capacity	23L / 23L

# OPTIONAL

To get the best performance of wheel loaders, final clients need to choose the suitable tyres.

Chenggong, a professional supplier, will provide you with a full range of tire solutions.

Item	Size	Tube Type	Code	Patterns	Diameter	Width	Tread Depth	Min speed / Max speed Load Capacity kg
1	17.5-25-12PR	TT	L-3		1350mm	445mm	26mm	6150/3650kg
2	17.5-25-12PR	TL	L-3		1350mm	445mm	26mm	6150/3650kg
3	17.5-25-14PR	TT	L-3		1350mm	445mm	27mm	6700/3930kg
4	17.5-25-16PR	TL	L-3		1350mm	445mm	26mm	7300/4250kg
5	17.5R25★	TL	L-5		1415mm	445mm	64mm	7100/4030kg
6	17.5R25★★	TL	L-5		1415mm	445mm	64mm	8500/5430kg
7	17.5R25★	TL	L-5S		1415mm	445mm	64mm	7100/4030kg
8	17.5R25★★	TL	L-5S		1415mm	445mm	64mm	8500/5430kg



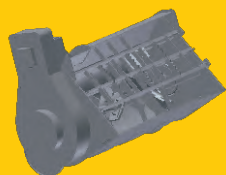


## ATTACHMENT

**1** Open design concept, optional standard work quick change mechanism, triple work valve, reserved power interface, provide a standard and reliable platform for multi-replacement, meet a variety of working conditions, and achieve multi-purpose.

**2** In order to give full play to the effectiveness of the loader as a wheeled work platform, Chenggong has created a variety of attachments to cope with the current situation of labor shortage, change the traditional construction methods, and provide customers with more opportunities to create value.

**3** Meeting customer needs and paying attention to customer concerns is our job orientation. As long as customers need you, you can contact us at any time. We will do our best to respond quickly.



MB1200 MIXING BUCKET



SWEeper



BACKHOE



AERIAL WORK DEVICE

Attachment	Picture	Capacity	Dump height	Dump Reach	Field
Quick hitch bucket		1.8m <sup>3</sup>	2800mm	1133mm	To replace the attachment in short time
Light material (Standard arm)		2.6m <sup>3</sup>	2787mm	1134mm	Mining, logistics, manufacture, agriculture
Light material (Long arm)		2.6m <sup>3</sup>	3059mm	1206mm	Mining, logistics, manufacture, agriculture
Light material (Super long arm)		2.2m <sup>3</sup>	3821mm	1331mm	Big size and dump height long for agriculture, animal husbandry, logistics, manufacture,
Long arm (General purpose)		1.8m <sup>3</sup>	3236mm	1029mm	Special working condition for long arm
Attachment	Picture	Fork length	Max lifting height	Fork width	Field
Fork		1350mm	3986mm	1488mm	Logistics, manufacture
Attachment	Picture	Effective diameter	Max Distance between fork teeth	Fork width	Field
Grass fork		Ø1031mm	2686mm	2024mm	Infrastructure construction, logistics, manufacture
Aligned teeth fork for timber field		Ø904mm	1498mm	1562mm	Logistics, manufacture, forestry

## OPTIONAL

1 4F/3R Electro hydraulic shift gearbox	2 Long arm	3 Double Pilot handle	4 Quick hitch	5 Oil-bath filter
6 Cabin UV protection film	7 Air suspension seat	8 Cabin glass protection kit	9 FOPS/ROPS	10 Triple multi-way valve
11 Rear view screen system	12 Rear wiper	13 Electronic balance device	14 Antirust oil for cargo ship delivery	15 GPS/Beidou navigation
16 Engine start up preheating auxiliary system	17 Balanced valve	18 TPC ( Tire protection chain )	19 Centralized lubrication system	20 LED light



## **CHINA CHENGGONG HEAVY INDUSTRY CO.,LTD.**

ADD: NO. 666 NANWU ROAD, ECONOMIC DEVELOPMENT ZONE, CHENGDU, CHINA

Website: [www.cgzgc.cn](http://www.cgzgc.cn) / [www.ccgheavy.com](http://www.ccgheavy.com)

Copyright ownership belongs to CHINA CHENGGONG HEAVY INDUSTRY CO.,LTD ,  
and CHENGGONG logo shall not be reproduced , copied,  
or used in other ways without permission.  
Otherwise CHINA CHENGGONG HEAVY INDUSTRY CO.,LTD  
will have the right to pursue legal responsibilities.

The image shown here is indicative only.  
If there is inconsistency between the image and the actual product,  
the actual product shall govern.  
The configuration and specifications are subject to change without prior notice.